



WRS COMPASS

**The Clean Choice
in Environmental Services**

Leader in Clean Remediation Technologies & Environmental Services

15 Offices Nationwide



KEY:  Corporate HQ  Local Offices  Equipment Center

About WRScompass

- Over 25 years in the environmental industry
- 450 Employees
- Industry leader in safety
- Financially stable
 - ✓ \$200 million in Annual Revenue
 - ✓ Superior Bonding Capacity
 - ✓ General Liability of \$20 million
- \$20 million owned and operated fleet of yellow iron
- Headquartered in Tampa, FL

A Recognized Leader in Safety

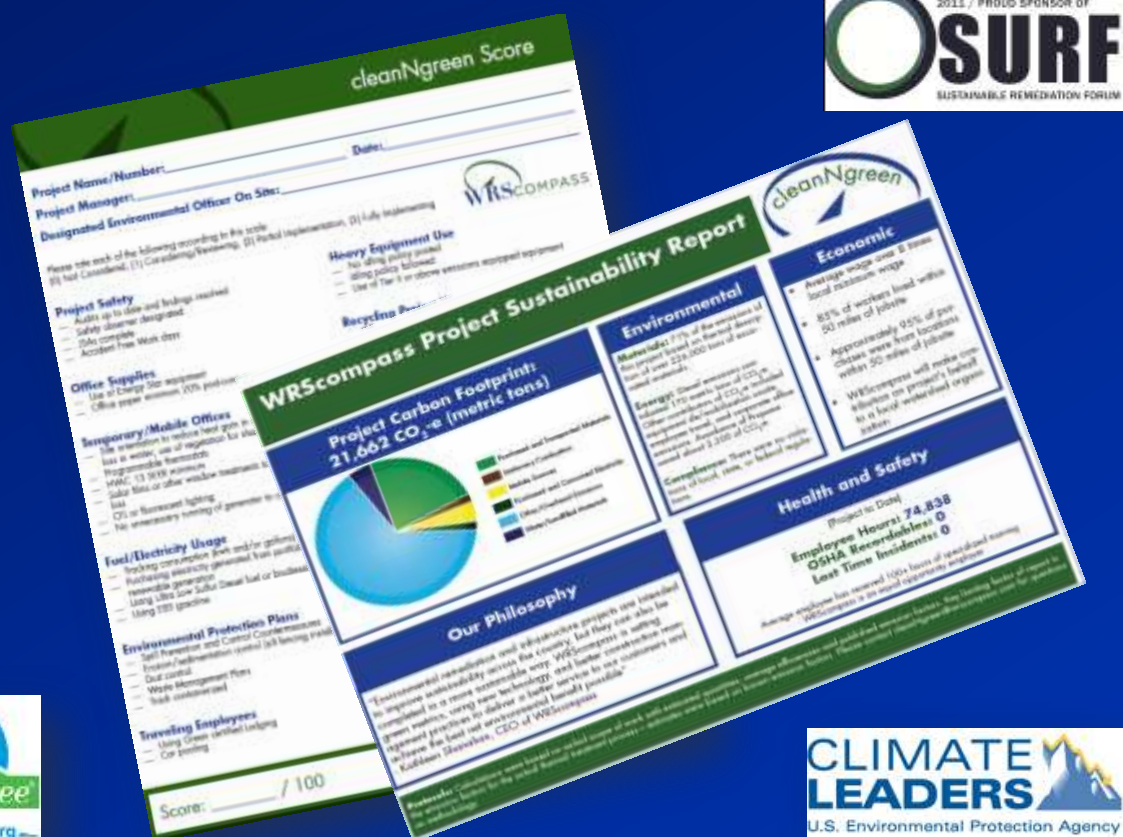


- US Army Corps of Engineers, Jacksonville District 2010 Safety Pays Award
- National Safety Council's Occupation Excellence Award
- Florida Transportation Builder's Association Award
- Bayer Crop Science 50,000 Project Safe Man-Hour Award
- BP Diamond National Award



- Outperformed industry safety average 19 years in a row
- Designated an industry leader by the National Safety Council
- Zero-incident culture
- Behavior-based safety program

cleanNgreen Sustainability Program



- Project-level carbon footprint calculation
- Improve the environmental stewardship of your projects
- Instill best practices
- Measure direct & indirect emissions
- Align projects with your organization's social responsibility & sustainability goals
- Achieve a net-environmental benefit

General Services

- *Remedial Technologies*
- *Remedial Construction*
- *Demolition and Decommissioning*
- *Water Resource Management*
- *Civil Construction*
- *Environmental Services*



General Services

Remedial Technologies



- Low-Temperature Thermal Treatment
- Groundwater Containment, Subsurface Water Barriers
- Soil Vapor Extraction Systems and Bioremediation
- Groundwater-Treatment Systems
- Soil Mixing/Soil Stabilization

Water-Resource Management



- Water Resource Infrastructure
- Surface-Water and Wetlands
- Sediment Removal and Dredging

Remedial Construction



- Construction Material Handling
- Landfill Capping and Construction
- On-site Waste Treatment
- Remediation Grading and Excavation

Civil-Construction



- General Excavation and Grading
- Soil Amendments and Ground Improvements
- Construction of Subsurface Barriers
- Poured and Precast-Concrete-Structure Placement
- Dewatering and Drainage Systems
- Pipe Rehabilitation

Demolition and Decommissioning



- Underground Piping/Structures Removal
- Selective Demolition/Plant Decontamination
- Structure Demolition
- Equipment Dismantling
- Investment Recovery
- Concrete Demolition and Crushing

Environmental Services



- Program Management
- Natural Resources
- Site Investigation
- Disaster Response

Remedial Technologies



- **Low-Temperature Thermal Treatment**
- **Groundwater Containment, Subsurface Water Barriers**
- **Soil Vapor Extraction Systems and Bioremediation**
- **Groundwater Treatment Systems**
- **Soil Mixing/Soil Stabilization**

On-Site Remedial Technologies

- ***Deep Subsurface Soil Remediation Using Vertical Auger Mixing***
 - Delivery system for Soil Stabilization (SS), enhanced Soil Vapor Extraction (SVE), chemical oxidation, and bio-treatment
 - Groundwater control system
 - Soil/Foundation improvement, liquefaction mitigation
 - Retaining walls and excavation support system
- ***Ex-Situ Solidification and Stabilization***
- ***Thermal Treatment***
 - In-Situ and Ex-Situ
 - Low-Temperature Thermal Desorption (LTTD)



Groundwater Control and Treatment Techniques



- **Slurry Cutoff Walls and Trenches**
- **Biopolymer Slurry Trenches**
- **Permeable Reactive Barriers, Funnel and Gate Systems**
- **Cap and Containment**

Demolition and Decommissioning



- **Underground Piping/Structures Removal**
- **Selective Demolition/Plant Decontamination**
- **Structure Demolition**
- **Equipment Dismantling**
- **Investment Recovery**
- **Concrete Demolition and Crushing**

Civil Construction

- General Excavation and Grading
- Soil Amendments and Ground Improvements
- Construction of Subsurface Barriers
- Poured and Precast Concrete Structure Placement
- Dewatering and Drainage Systems
- Pipe Rehabilitation



Water Resource Management



January 20, 2009



January 27, 2010

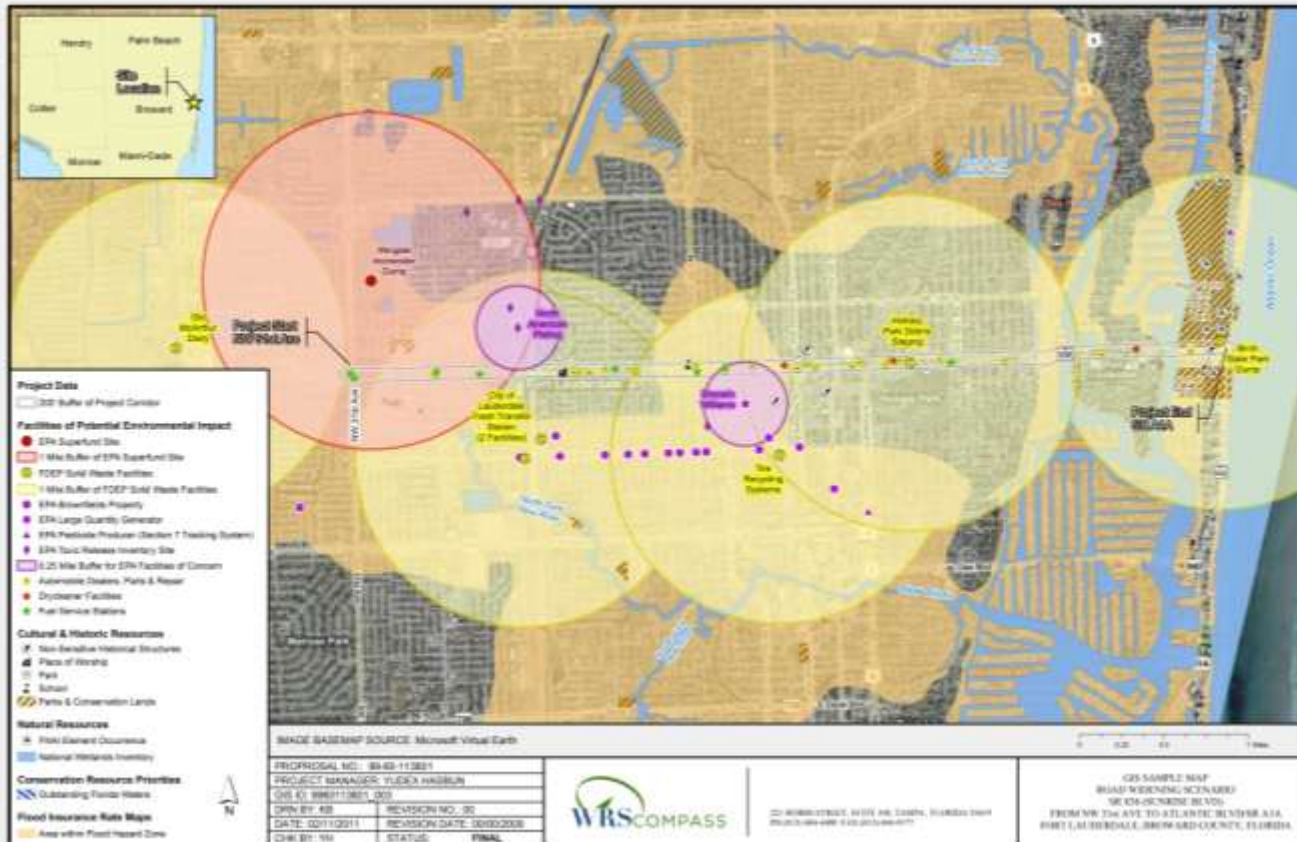
- **Water Resource Infrastructure**
- **Sediment Dredging and Removal**
- **Flood Protection**
- **Water Containment**
- **Stream Channel and Bank Restoration**
- **Habitat Construction/Wetland Cells**
- **Water Quality Programs**

Program Management

- Large Tract Phase I/II
- Hydraulic and Hydrology Analysis
- Stormwater Design, Retrofitting, Rehabilitation, and Construction
- Wetland Assessment, Construction, and Remediation
- Water Resource Engineers
- Remediation Construction



In-house Technical Expertise



- Engineers
- Geologists
- Chemists
- Safety Experts
- Practice Area Experts
- Geographic Information System Professionals

Unparalleled Diversity of Projects

- *Levee Construction* – New Orleans West Bank Vicinity
- *Environmental Restoration* – Kissimmee River
- *Onsite Thermal Treatment* – Maryland Sand & Gravel
- *Emergency Response* – Deepwater Horizon Oil Spill and Kalamazoo Oil Spill
- *Program Management* – Florida Department of Environmental Protection: Management of Underground Storage Tank Program
- *Everglades Restoration* – C-111 with South Florida Water Management District
- *Water Infrastructure Rehabilitation* – City of Live Oak
- *In-situ Stabilization and Sustainable Remediation* – Sanford MGP Site
- *Demolition and Decommissioning* – Westinghouse Corporation



Thank You!

- **We are a client focused, building strong relationships leading to long-term partnerships**
- **We offer diverse experience and capabilities that create multiple efficiencies to help projects run seamlessly**
- **We have national experience in improving the usefulness of contaminated land and increasing return on investment**

